

Hochharte Schneidstoffe

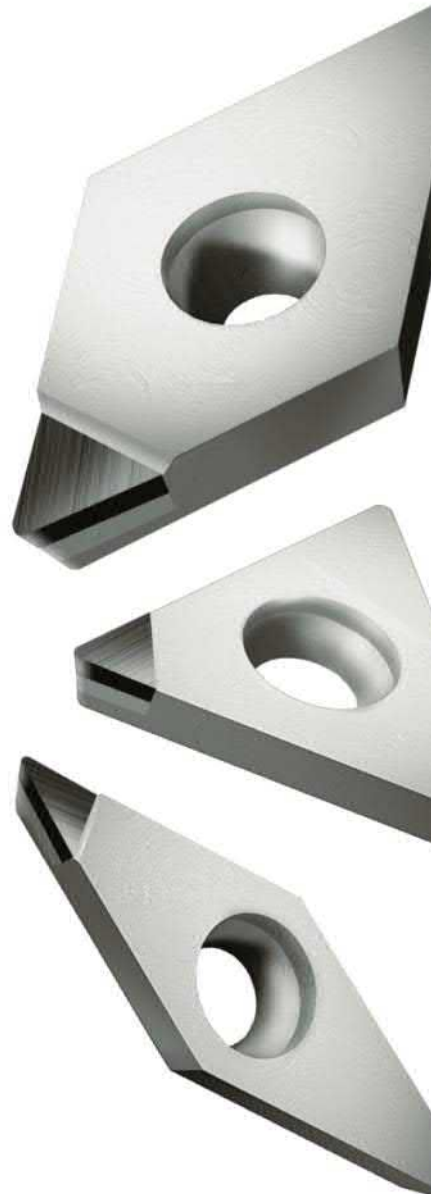
CBN/PKD

Ultra-Hard Cutting Materials CBN/PCD

Matériaux extra-durs CBN/PCD



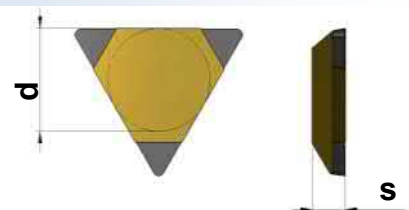
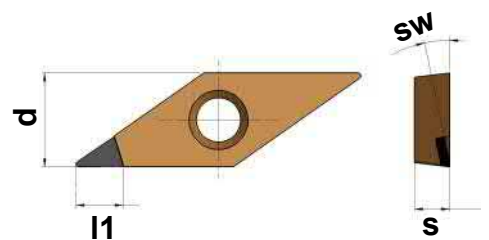
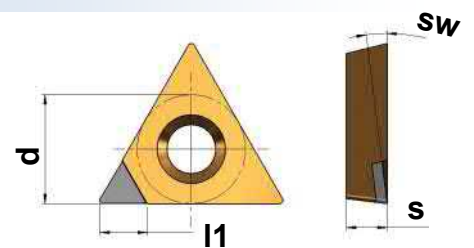
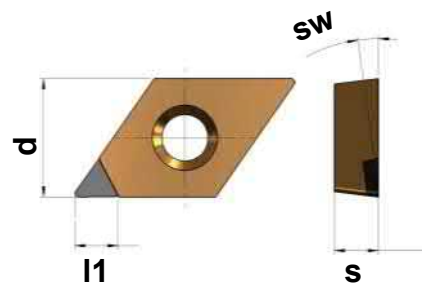
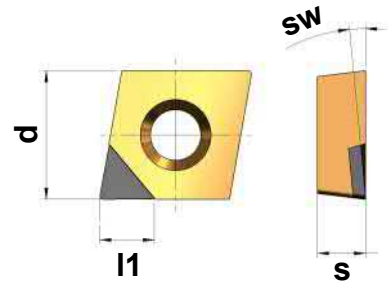
www.dieterle-tools.com



CBN Schneidplatten

CBN Inserts / Plaquettes CBN

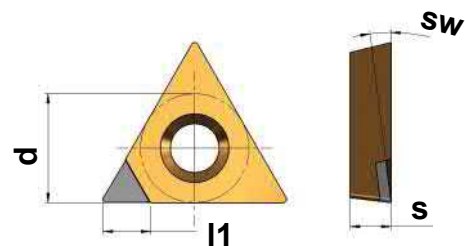
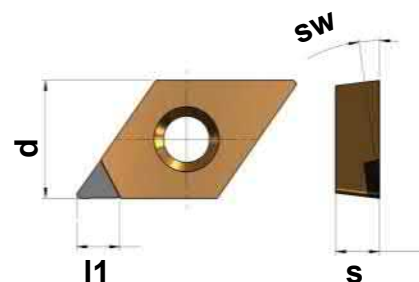
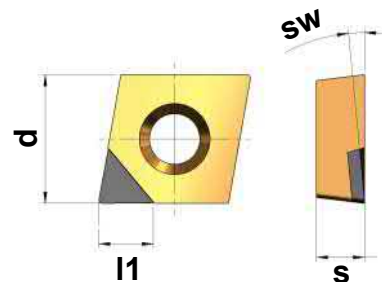
Art. Nr. Item no. No. d'art.	Bezeichnung Designation Désignation	SW	Schneiden Flutes Coupes	l1	d	s
147564	CCMT-CBN					
159199	CCMT-060202FN-CBN	7°	1	3,4	6,35	2,38
159200	CCMT-060204FN-CBN	7°	1	3,1	6,35	2,38
159201	CCMT-060208FN-CBN	7°	1	2,8	6,35	2,38
159202	CCMT-09T302FN-CBN	7°	1	3,4	9,52	3,97
122275	CCMT-09T304FN-CBN	7°	1	3,1	9,52	3,97
159203	CCMT-09T308FN-CBN	7°	1	2,8	9,52	3,97
147576	CCMW-CBN					
107575	CCMW-030102-CBN	0°	1	1,2	3,53	1,46
159204	CCMW-060202FN-CBN	0°	1	3,4	6,35	2,38
159205	CCMW-060204FN-CBN	0°	1	3,1	6,35	2,38
159206	CCMW-060208FN-CBN	0°	1	2,8	6,35	2,38
159207	CCMW-09T304FN-CBN	0°	1	3,1	9,52	3,97
159208	CCMW-09T308FN-CBN	0°	1	2,8	9,52	3,97
147579	CPMW-CBN					
159210	CPMW-050202FN-CBN	0°	1	2,4	5,56	2,38
159211	CPMW-050204FN-CBN	0°	1	2,4	5,56	2,38
159212	CPMW-060202FN-CBN	0°	1	3,4	6,35	2,38
159213	CPMW-09T302FN-CBN	0°	1	3,4	9,52	3,97
159214	CPMW-09T304-FN-CBN	0°	1	3,4	9,52	3,97
147580	DCMT-CBN					
122274	DCMT-070202FN-CBN	7°	1	3,7	6,35	2,38
155145	DCMT-070204FN-CBN	7°	1	3,4	6,35	2,38
159215	DCMT-11T302FN-CBN	7°	1	4,7	9,52	3,97
159216	DCMT-11T304FN-CBN	7°	1	4,3	9,52	3,97
147581	DCMW-CBN					
146377	DCMW-070202-CBN	0°	1	3,7	6,35	2,38
159217	DCMW-11T302FN-MW-CBN	0°	1	5,6	9,52	3,97
121520	DCMW-11T304FN-MW-CBN	0°	1	5,5	9,52	3,97
159219	DCMW-150404TN-MW-CBN	0°	1	5,5	12,7	4,76
147593	TCMT-CBN					
159220	TCMT-110202FN-CBN	7°	1	3,8	6,35	2,38
159221	TCMT-110204FN-CBN	7°	1	3,5	6,35	2,38
147583	TCMW-CBN					
159222	TCMW-110202FN-CBN	0°	1	3,8	6,35	2,38
124142	TCMW-110204FN-CBN	0°	1	3,5	6,35	2,38
159223	TCMW-16T304FN-CBN	0°	1	3,5	9,52	3,97
147584	VCMT-CBN					
151702	VCMT-070202FN-CBN	7°	1	3,5	3,97	2,38
159224	VCMT-110302FN-CBN	7°	1	3,5	6,35	3,18
159225	VCMT-130302FN-CBN	7°	1	3,5	7,94	3,18
159226	VCMT-160404FN-CBN	7°	1	3,1	9,52	4,76
147586	VCMW-CBN					
159227	VCMW-070202FN-MW-CBN	0°	1	3,8	3,97	2,38
108874	VCMW-110302FN-MW-CBN	0°	1	4,7	6,35	3,18
122276	VCMW-130302FN-MW-CBN	0°	1	5,3	7,94	3,18
159228	VCMW-160404FN-MW-CBN	0°	1	5	9,52	4,76
	TOFX					
103742	TOFX-230801-CBN	0°	3	-	2,48	0,8
103750	TOFX-230802-CBN	0°	3	-	2,48	0,8



PKD Schneidplatten

PCD Inserts / Plaquettes PCD

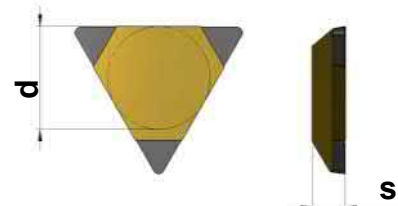
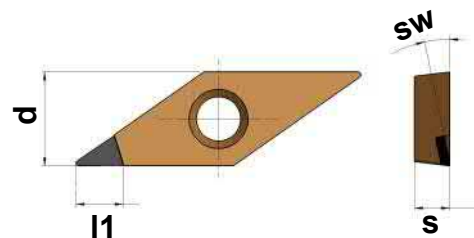
Art. Nr. Item no. No. d'art.	Bezeichnung Designation Désignation	SW	Schneiden Flutes Coupes	l1	d	s	Wiper
147587	CCMT-PKD						
159096	CCMT-060202FN-PKD	7°	1	3,4	6,35	2,38	
159097	CCMT-060204FN-PKD	7°	1	3,2	6,35	2,38	
159098	CCMT-09T302FN-PKD	7°	1	4,5	9,52	2,38	
159099	CCMT-09T304FN-PKD	7°	1	4,3	9,52	2,38	
159100	CCMT-060202FN-W-PKD	7°	1	3,3	6,35	3,97	x
159101	CCMT-060204FN-W-PKD	7°	1	3,1	6,35	3,97	x
159102	CCMT-09T302FN-W-PKD	7°	1	4,4	9,52	3,97	x
159103	CCMT-09T304FN-W-PKD	7°	1	4,2	9,52	3,97	x
147589	CCMW-PKD						
115312	CCMW-030102-PKD	0°	1	1,3	3,53	1,46	
159104	CCMW-060202FN-W-PKD	0°	1	3,3	6,35	2,38	x
159105	CCMW-060204FN-W-PKD	0°	1	3,1	6,35	2,38	x
159106	CCMW-09T302FN-W-PKD	0°	1	4,4	9,52	3,97	x
159107	CCMW-09T304FN-W-PKD	0°	1	4,2	9,52	3,97	x
147590	CPMW-PKD						
159108	CPMW-050202FN-PKD	0°	1	2,4	5,56	2,38	
159110	CPMW-050202FN-W-PKD	0°	1	2,4	5,56	2,38	x
118409	CPMW-060202FN-PKD	0°	1	3,4	6,35	2,38	
159112	CPMW-060204FN-PKD	0°	1	3,2	6,35	2,38	
159113	CPMW-09T304FN-PKD	0°	1	4,3	9,52	3,97	
147591	DCMT-PKD						
137567	DCMT-070201FN-PKD	7°	1	3	6,35	2,38	
137566	DCMT-070202FN-PKD	7°	1	3,7	6,35	2,38	
121521	DCMT-070204FN-PKD	7°	1	3,4	6,35	2,38	
135013	DCMT-11T302FN-PKD	7°	1	4,7	9,52	3,97	
121522	DCMT-11T304FN-PKD	7°	1	4,3	9,52	3,97	
147592	DCMW-PKD						
121536	DCMW-11T302FN-PKD	0°	1	4,7	9,52	3,97	
108630	DCMW-11T304FN-PKD	0°	1	4,3	9,52	3,97	
147582	TCMT-PKD						
159126	TCMT-110202FN-PKD	7°	1	3,7	6,35	2,38	
121523	TCMT-110204FN-PKD	7°	1	3,4	6,35	2,38	
159127	TCMT-16T304FN-PKD	7°	1	4,6	9,52	3,97	
147594	TCMW-PKD						
159128	TCMW-110202FN-PKD	0°	1	3,7	6,35	2,38	
121526	TCMW-110204FN-PKD	0°	1	3,4	6,35	2,38	
159129	TCMW-16T304FN-PKD	0°	1	4,6	9,52	3,97	



PKD Schneidplatten

PCD Inserts / Plaquettes PCD

Art. Nr. Item no. No. d'art.	Bezeichnung Designation Désignation	SW	Schneiden Flutes Coupes	l1	d	s	Wiper
147595	VCMT-PKD						
157346	VCMT-070201FN-PKD	7°	1	3,8	3,97	2,38	
121524	VCMT-070202FN-PKD	7°	1	3,6	3,97	2,38	
159131	VCMT-070204FN-PKD	7°	1	3,2	3,97	2,38	
135015	VCMT-110302FN-PKD	7°	1	4,6	6,35	3,18	
121525	VCMT-110304FN-PKD	7°	1	3,9	6,35	3,18	
121322	VCMT-130302FN-PKD	7°	1	5,9	7,94	3,18	
137247	VCMT-130304FN-PKD	7°	1				
159145	VCMT-160402FN-PKD	7°	1	5,9	9,52	4,76	
159146	VCMT-160404FN-PKD	7°	1	5,5	9,52	4,76	
147596	VCMW-PKD						
159147	VCMW-070201FN-PKD	0°	1	3,8	3,97	2,38	
121527	VCMW-070202FN-PKD	0°	1	3,6	3,97	2,38	
148298	VCMW-110301FN-PKD	0°	1	4,6	6,35	3,18	
109005	VCMW-110302FN-PKD	0°	1	4,6	6,35	3,18	
121528	VCMW-110304FN-PKD	0°	1	3,9	6,35	3,18	
108446	VCMW-130302FN-PKD	0°	1	5,9	7,94	3,18	
121529	VCMW-130304FN-PKD	0°	1	5,5	7,94	3,18	
159148	VCMW-160402FN-PKD	0°	1	5,9	9,52	4,76	
159149	VCMW-160404FN-PKD	0°	1	5,5	9,52	4,76	
	TOFX						
103743	TOFX-230801-PKD	0°	3	-	2,48	0,8	
103751	TOFX-230802-PKD	0°	3	-	2,48	0,8	



PKD bestückte Formstechwerkzeuge auf Anfrage lieferbar!

PCD form grooving tools available on request!

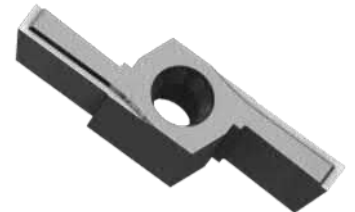
Outils de profilage à insert PCD livrables sur demande!



Schneidplatten mit Diamantbeschichtung

Inserts with Diamond Coating / Plaquettes avec revêtement diamant

Bearbeitung Machining Type Usinage	Bezeichnung Designation Désignation	Art. Nr. Item no. No. d'art.	Diamant beschichtete Schneiden No. of diamond coated flutes No. de coupes revêtées en diamant
Kopieren Copying Décolletage	DCGT-070202-N-ASF-FA-K10-BDD	122279	2
	DCGT-11T302-N-ASF-FA-K10-BDD	120521	2
	DCGT-070202-N-AWI-FA-BDD	121239	2
	VCGT-160404-N-ALU-FA-G7B-BDD	155566	2
	VCGT-070204-N-ASF-FA-BDD	125098	2
	VCGT-110302-N-ASF-FA-K10-BDD	120519	2
	VCGT-130304-N-ASF-FA-K10-BDD	121325	2
Langdrehen Turning Chariotage	TCGT-110202-R-ASF-FA-K10-BDD	120520	3
Stechedrehen Grooving and Turning Plongée et chariotage	SCEL-0608-20-R-G1A-K10-BDD	159230	2
	SCEL-0808-30-R-G1A-K10-BDD	120522	2
Abstechen Parting-off Tronçonnage	DAK-16-4°-RF-UFK2-BDD	122267	1
	DAK-24-5-R-RF-UFK2-BDD	122266	1
	DAK-32-5-R-LF-UFK2-BDD	122447	1
	DAK-32-5°-R-RF-UFK2-BDD	120523	1



Weitere Plattentypen auf Anfrage lieferbar!

Other insert types available on request! / D'autres types de plaquettes livrables sur demande!

Passende Werkzeughalter finden Sie in unserem Katalog

"Drehwerkzeuge für die Außenbearbeitung"

Suitable tool holders: Please refer to our catalogue "Turning Tools for External Machining"

Porte-plaquettes: Voir notre catalogue "Porte-outils pour usinage extérieur"

Otto Dieterle Spezialwerkzeuge GmbH

Predigerstr. 56
78628 Rottweil, Germany

Tel.: +49 (0) 741 / 9 42 05 - 0
Fax: +49 (0) 741 / 9 42 05 - 50
Email: info@dieterle-tools.com

www.dieterle-tools.com

